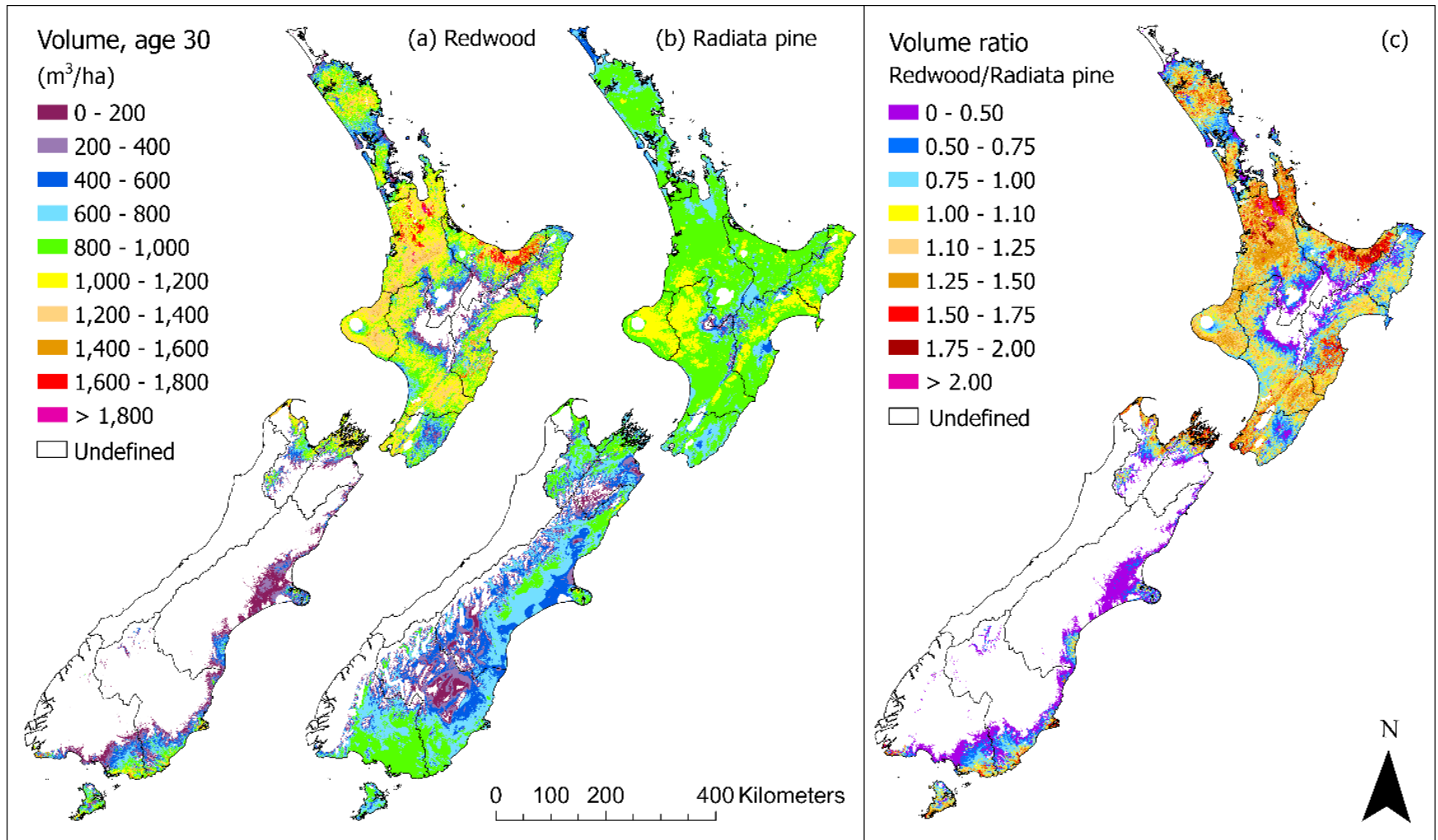


Productivity surfaces describing volume and carbon for radiata pine and alternative species

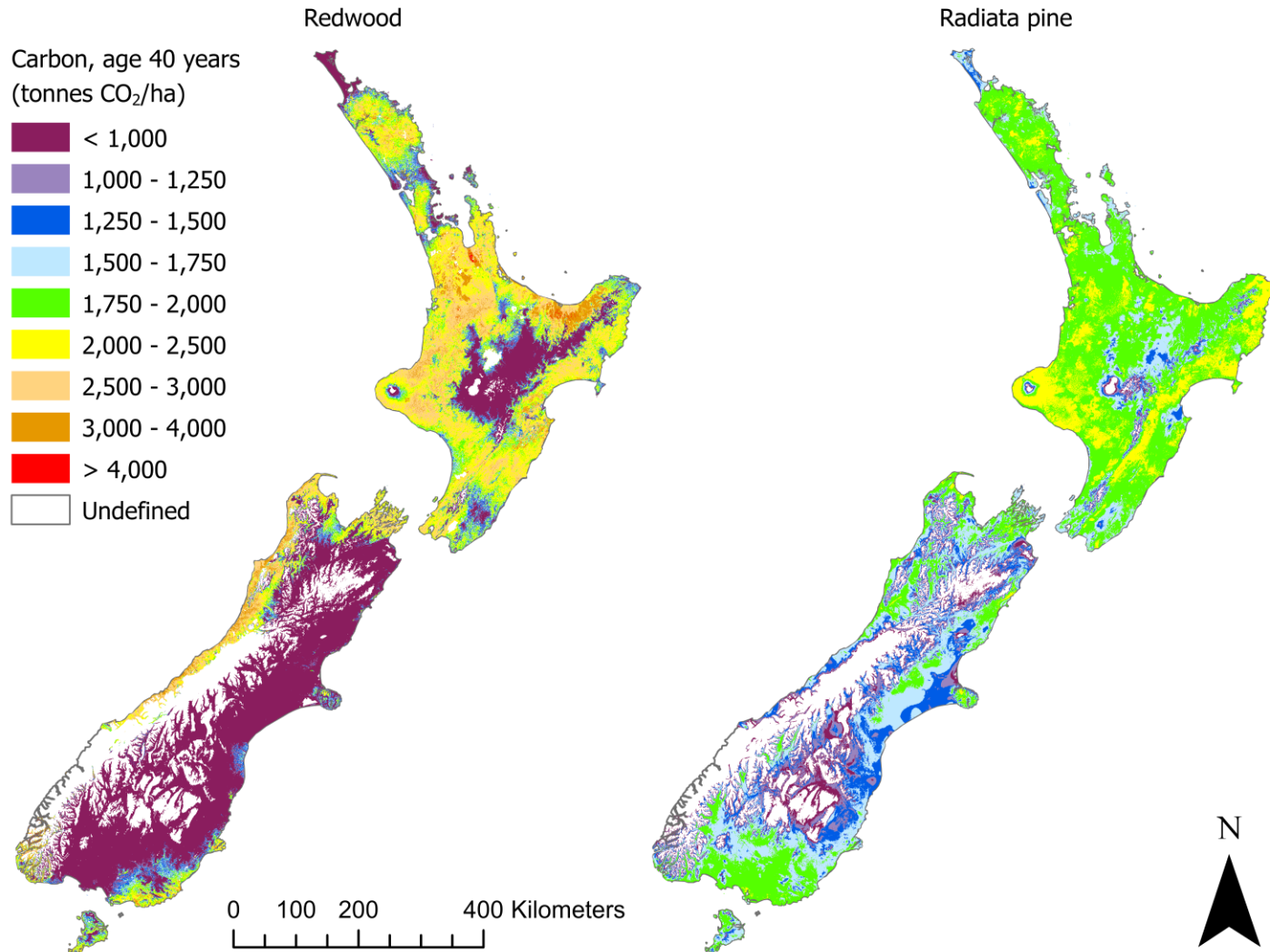
Michael Watt, Mark Kimberley, Grant Pearse, Ben Steer, Andrew Holdaway

Site Index and 300 Index (MAI, age 30) predicted at national level for radiata pine, other alternative species



Watt, M.S., Kimberley, M.O., Rapley, S., Webster, R. (2021) A spatial comparison of redwood and radiata pine productivity throughout New Zealand. *New Zealand Journal of Forestry* 66, 33-41.

Spatial predictions of productivity indices underpin spatial predictions of carbon



Watt, M.S., & Kimberley, M. O. (2022) Spatial comparisons of carbon sequestration for redwood and radiata pine within New Zealand. *Forest Ecology and Management* 513, 120190

All radiata pine and redwood indices and carbon surfaces have been uploaded to koordinates

The screenshot shows the website koordinates.com with a search for "radiata pine" in New Zealand. The search results are displayed on the left side of the page, showing 20 of 2,198 results. The results are sorted by popularity and include the following datasets:

- Spatial variation in radiata pine volume productivity**
Scion Research
CC-BY-NC-ND
10 Jun 2022
706 ↓ 37
- Spatial variation in radiata pine height productivity**
Scion Research
CC-BY-NC-ND
11 Jun 2022
542 ↓ 28
- Spatial variation in radiata pine carbon – age 30, medium stocking**
Scion Research
CC-BY-NC-ND
11 Jun 2022
425 ↓ 15
- Spatial variation in radiata pine carbon – age 50, medium stocking**
Scion Research

The right side of the page shows a map of New Zealand with the selected dataset, "Spatial variation in radiata pine volume productivity, New Zealand", displayed. The map includes a scale bar (200 km / 200 mi) and a "Map" button. The website's navigation bar includes "Pricing", "Request a demo", "Data", and "Map" tabs. The browser's address bar shows the URL koordinates.com/data/?q=radiata+pine.

<https://koordinates.com>

Direct links to publicly available surfaces

Redwood 300 Index and Site Index

<https://scion.koordinates.com/layer/105758-redwood-productivity-surface-300-index/>

<https://scion.koordinates.com/layer/109623-spatial-variation-in-redwood-site-index/>

Redwood carbon surfaces, age 40, low, medium, high stocking

<https://scion.koordinates.com/layer/107480-redwood-carbon-surface-age-40-low-stocking/>

<https://scion.koordinates.com/layer/107479-redwood-carbon-surface-age-40-medium-stocking/>

<https://scion.koordinates.com/layer/107478-redwood-carbon-surface-age-40-high-stocking/>

Redwood carbon surfaces, age 30, 50 - medium stocking

<https://scion.koordinates.com/layer/109631-spatial-variation-in-redwood-carbon-at-age-30-medium-stocking/>

<https://scion.koordinates.com/layer/109632-spatial-variation-in-redwood-carbon-at-age-50-medium-stocking/>

Radiata pine 300 Index and Site Index

<https://scion.koordinates.com/layer/107990-spatial-variation-in-radiata-pine-volume-productivity/>

<https://scion.koordinates.com/layer/108095-spatial-variation-in-radiata-pine-height-productivity/>

Radiata pine carbon surfaces, age 30, low, medium, high stocking

<https://scion.koordinates.com/layer/108359-spatial-variation-in-radiata-pine-carbon-age-30-low-stocking/>

<https://scion.koordinates.com/layer/108363-spatial-variation-in-radiata-pine-carbon-age-30-medium-stocking/>

<https://scion.koordinates.com/layer/108362-spatial-variation-in-radiata-pine-carbon-age-30-high-stocking/>

Radiata pine carbon surfaces, age 40, 50 - medium stocking

<https://scion.koordinates.com/layer/108361-spatial-variation-in-radiata-pine-carbon-age-40-medium-stocking/>

<https://scion.koordinates.com/layer/108360-spatial-variation-in-radiata-pine-carbon-age-50-medium-stocking/>

Dothistroma needle blight

<https://scion.koordinates.com/layer/105372-spatial-variation-in-dothistroma-needle-blight-within-new-zealand/>

Further research and development

- Investigating options to directly stream surfaces into ArcGIS Online
- Would be interested to know if this method is widely used
- *Cupressus* spp. surfaces under development
- *Eucalytpus* spp. PSP data requested

Acknowledgements

Companies for granting permission to use PSP data